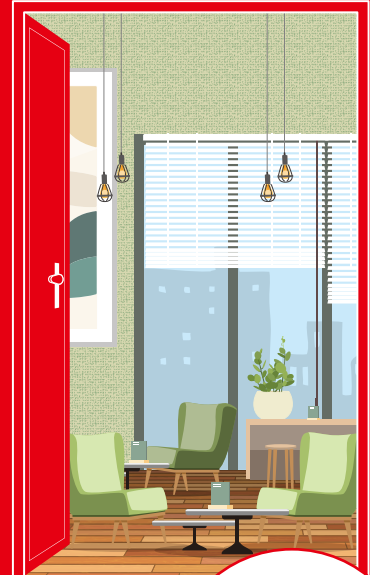


**The
future of
interior
design is
here.**



**New
forms of
materials
and
design.**

**Exhibition
application
form
enclosed**

The 45th Japan's Largest International Interior Trend Fair

JAPANTEX 2026

INTERIOR TREND SHOW

Invitation to Exhibit

2026. **11.18** Wed > **11.20** Fri **Tokyo Big Sight, West Hall 4**
9:30-17:00



www.japantex.jp

**Architecture
+ Interior WEEK**

Organizer Nippon Interior Association **Co-sponsored** Japan Management Association

Jointly held Japan Home Show & Building Show 2026 **The 11th Asia Furnishing Fair 2026**

New forms of materials and design.

An exhibition where the latest decorative products for windows, walls, floors, etc. and interior professionals gather together.

The future of interior design is here.

INTERIOR TREND SHOW

JAPANTEX2026

1 Outline

Title	JAPANTEX2026	Prospective Visitors	39,000 Visitors (Architecture + Interior Week and Jointly held exhibition's total)
Organizer	Nippon Interior Association (NIF) 2F, Asakawa Bldg., 2-1-17, Shibadaimon, Minato-ku, Tokyo 105-0012 Japan TEL+81-3-3433-4521 FAX+81-3-3433-7860 Japan Management Association 3-1-22 Shibakoen, Minato-ku, Tokyo 105-8522, Japan	Joint Exhibition	Architecture + Interior Week The 45th JAPANTEX 2026 The 48th Japan Home Show & Building Show 2026 The 11th Asia Furnishing Fair 2026
Date/Opening Hours	November 18 (Wed) - 20 (Fri), 2026 9:30-17:00	Concurrent Exhibition	Building Maintenance & Clean Expo 2026 The 48th HOSPEX JAPAN
Venue	Tokyo Big Sight, West Hall 4 3-11-1 Ariake, Kotoku, Tokyo 135-0063 Japan		
Support (tentative)	Ministry of Economy, Trade and Industry (METI), Japan External Trade Organization (JETRO), Japan International Trade Promotion Association, Embassies of exhibiting countries (in no particular order)		
Total Space	6,840 m ² (Planned)		
Number of Exhibitors	192 Companies (2025 Results)		
Number of Booths	543 Booths (2025 Results)		

2 Exhibits

Window Treatments

Curtains, Blinds, Screens, Curtain Rail, Upholstery, Decoration Fabrics, Fabrics, etc.

Eco-friendly products

Products that are environmentally friendly from manufacturing to disposal, products for prevent infectious diseases, etc.

Japanese-Traditional

Fabrics, Japanese Paper, Wooden Products, Lacquer Products, etc.

Wall Coverings

Curtains, Blinds, Screens, Curtain Rail, Upholstery, Decoration Fabrics, Fabrics, etc.

Home Fashion

Cushions, Tapestries, Tableware, Upholstery Fabrics, Towels, Bedding, Interior Goods, Picture Frames, Picture Rails, Furniture, Interior Lighting, Interior flower plants, Door, Kitchen Bath Sink etc, Other

Interior Publishers

Press, Media

Floor Coverings

Carpets, Hand Woven Carpets, Rugs / Mats, Flooring, Corktile, Plastic / Flooring Materials, Skirting Board, Tatami, Fiber Materials, Other

Technology / DigitalPrint

Sewing Machines, Glues, Repair Items, Equipment, Software, Printers, Digital print, IoT, DX, Home Automation, etc.

ETC.

Textile design, Textile pattern, etc.

3 Schedule

6.19 [Fri]	7.21 [Tue]	8.20 [Thu]	Scheduled for September	
Early bird discount application deadline	Exhibit application deadline	Exhibitor payment deadline	Exhibitor Briefing	
*Please fill out the necessary items on the exhibition application form and mail it.	*Please fill out the necessary items on the exhibition application form and mail it. *Even before the deadline, the deadline will be closed if the planned number of booths is reached.	*Based on the exhibition application form, the secretariat will send you an invoice, so please transfer it to the designated account. (Please pay the transfer fee yourself)	*We will distribute various documents and announce the location of the booth.	



JAPANTEX2025 Achievements

New business opportunities.

Total number of visitors (Including joint exhibitions)

39,766 Visitors

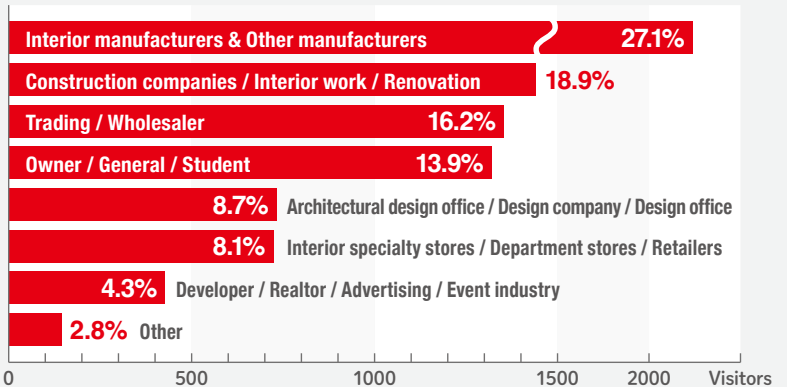
Interior Coordinator **984** Visitors

Architects **581** Visitors

Window Treatment Planners **505** Visitors

Interior Planner **154** Visitors

JAPANTEX2026 Visitors (8,411 registrants)



Exhibitor's

98.8% Exhibition had a good effect.

Of exhibitor's

98.8% Will Consider Exhibiting

Of visitors

93.5% Was satisfied.

Representative of Applicant (Alphabetical order)

Exhibitor Name

Art House Design
akari image
ARTWORKSTUDIO
ASAHI RUBBER
Flames
Hikarino Atelier PaperMoon
INTERFORM
KATARAI
LIGHTING DESIGN LUME
Lighting Design Netwok
Lumimedia lab
MAEDAGIKEN
NIPPON DESIGNERS SCHOOL
RAYDESIGN
SEKONIC
SONOBE DESIGN OFFICE
SOU DESIGN
SPACE DESIGN COLLEGE
Team Home Lighting
TIC
TOKYO DESIGN PARTY
TSUNAGU DESIGN MANAGEMENT
Y2 LIGHTING DESIGN
YAE
YAMAWAKI DESIGN COLLEGE
ALBA Textile Design Studio
Yuiko Yamashita
Yuri Umehara
AS Fabrics 1996 S.L.
Bakoh Carpeting/Green-Flor
BAMBOOLYO
Beijing RealDao International Exhibition
HANGZHOU HEGE HOME TEXTILES
Shandong Angel Home Textile
Tongxiang Mingyuan Import & Export
Changzhou Lingda Special Fibre
CSStokyo
DAISEN
DENRAI
DOMOTEX
DREAMBEER
Freudenberg Spunweb Japan
Fusion Home Fashions International
FUTURA Leathers
Hangzhou Rosen Import & Export
houwa-kagaku
INTERIOR JOUHO KIKAKU
Interior-fabrics Performance Evaluation Conference
Interior Design and Furniture Frankfurt (HK)

JAPAN CARPET
British Wool
HASETORA SPINNING
Hiraku Textile
HOTTA CARPET
IICRC JAPAN
Japan Shikimono Danchi
KAWASHIMA SELKON TEXTILES
MURAKAMI SHIKIMONO(JAPAN CARPET MANUFACTURES)
NIHON SHORYOKU
OHNO
SUMINOE
SUMIYOSHI

Sunchemical
TAJIMA ROOFING
Toabo Material
TOLI
Toray Amtecs
YAMAMOTO INDUSTRIAL
YF carpet
JAPAN CONSTRUCTION INTERIOR
JAPAN INTERIOR DECORATION(JIDA)
JAPAN INTERIOR INDUSTRY ASSOCIATION
Kagawa International Textiles
CLARKE & CLARKE
Casal
KAKEN TEST CENTER
KANTO CONSTRUCTION INTERIOR
KAWASHIMA SELKON TEXTILES
KE' KEN Textile Testing & Certification Center
Kenzai Navi
LILYCOLOR
LIMELIGHT
MAEDA GIKEN
Mehrali Carpet/Nara Yamato
MIMAKI ENGINEERING
Motherz
Nantong Longqi Interior
NINGBO LIYANG NEW MATERIAL
NICHIBEI

Akita University of Art
Bunka Gakuen University
Joshi University of Art and Design
Joshi University of Art and Design Junior College
Kanazawa College of Art
Kobe Design University
Kyoto City University of Arts
Kyoto Seika University
Kyoto University of the Arts
Kyushu Sangyo University
Musashino Art University
Nagaoka Institute of Design
Nagoya University of the Arts
Nihon University College of Art
Okayama Prefectural University
Osaka University of Arts
Sagami Women's University
Seian University of Art and Design
Shizuoka University of Art and Culture
Tama Art University
Tohoku University of Art and Design
Tokyo University of the Arts
Tokyo Zokei University
Yokohama University of Art and Design
NINGBO LIYANG NEW MATERIAL
Ningbo Meiyee Home
Ouyida International Exhibition(Beijing)
Guangzhou Hande New Materials
HANGZHOU WINDOW EASE DECO
Hangzhou Window Life Hardware
HEZE HUASHENG WOODEN
NINGBO LIYANG NEW MATERIAL
PENNDI INTELLIGENT HOME (PIZHOU)
Santex Home Fashions(Tianjin)
SHAOXING BIGU TEXTILES
WEIFANG DINGFENG ECONOMIC & TRADE
YJ FLAME RETARDANT FABRIC

YONGKANG DONGQI HOUSEHOLD PRODUCTS
ZHEJIANG QIANGWEI HARDWARE
PASAYA
WIS
Premium Water
Prossimo
alta
Angelo Carillo
COULISSE
IFI
THEMA
RoomClip
SAKURA COLOR PRODUCTS
SANGETSU
Shinoda/Karakmamiya
SINCOL INTERIOR
SK Kaken
SUMINOE
SUNROSE
TACHIKAWA
Tento mushi
TOA CORK
Tokyo Hyougu Kyouji International Culture
TOLI
TOSO
VOVOFORMING
VIDYA
Asahi
WALL COVERING ASSOCIATION OF JAPAN
Ayumi Shima
Curiousa Authentior FAVORI INTERNATIONAL
AL
Farrow&Ball GINZA
FISBA
KAGU KOBO Les Beaux Bois
KAWASHIMA SELKON TEXTILES
KYOKKO
LILYCOLOR
MANAS TRADING
NICHIBEI
SANGETSU
Scolaro japan
SINCOL INTERIOR
SOFTPREN INDUSTRY CORPORATION
Soma Kobo
SUMINOE Interior Products
WEIFANG DINGFENG ECONOMIC & TRADE
Tokyo order curtain
TOLI
TOMITA
TOSO
Towa Shokai
ASWAN
KAWASHIMA SELKON TEXTILES
LILYCOLOR
SANGETSU
SINCOL INTERIOR
SUMINOE Interior Products
TOLI
WUXI FUXING CARPET

Exhibit Fee

Method of Payment • Bank transfer in Japanese Yen only • Bank transfer fee shall be covered by the applicant

Early Bird Application Deadline **JUNE 19 (Fri), 2026** **Ordinary Application Deadline** **JULY 21 (Tue), 2026**

*System fixture poles are aluminum painted black.

Free Booth



Basic Booth(6 booths)

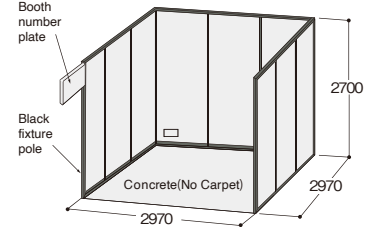
1 booth=9㎡(3m×3m)

Early Bird JPY **440,000**

Ordinary JPY **495,000**

Carpet	CAUTION You must install floor covering such as carpets.	×
Back (White system wall panel H2.7m,Black pole) *		○
Side (White system wall panel H2.7m,Black pole) *		○
Booth number plate *		○
300W main electrical power supply (a breaker switch only - no outlet)	300W	

*Will not provide system wall panels and booth number plate if no adjacent booth.



Packaged Booth

1-4 booth units

1 booth=9㎡(3m×3m)

Early Bird JPY **540,900**

Ordinary JPY **595,900**

2 booth=18㎡(3m×6m)

Early Bird JPY **1,052,100**

Ordinary JPY **1,162,100**

3 booth=27㎡(3m×9m)

Early Bird JPY **1,561,100**

Ordinary JPY **1,726,100**

4 booth=36㎡(3m×12m)

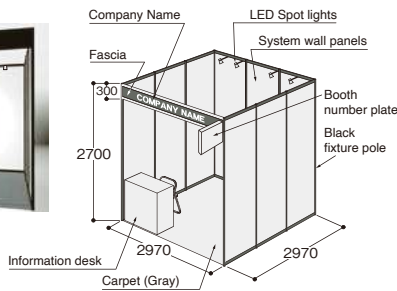
Early Bird JPY **2,067,900**

Ordinary JPY **2,287,900**

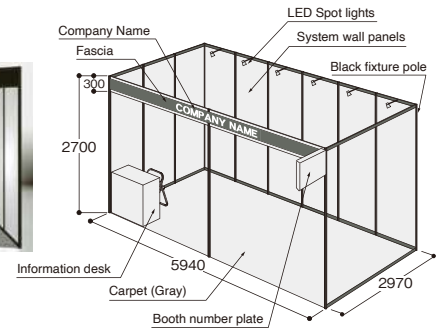
	1booth	2booth	3booth	4booth
Carpet (Gray)	9㎡	18㎡	27㎡	36㎡
Back (White system wall panel H2.7m,Black pole) *	○	○	○	○
Side (White system wall panel H2.7m,Black pole) *	○	○	○	○
Booth number plate *	○	○	○	○
300W main electrical power supply (a breaker switch only - no outlet)	300W	600W	900W	1200W
Fascia (Black)	1	1	1	1
Company name	1	1	1	1
Information desk	1	1	1	1
Folding chair	1	1	1	1
LED spot lights	3	6	9	12

*Will not provide system wall panels and booth number plate if no adjacent booth.

ex:1booths



ex:2booths



Compact Booth

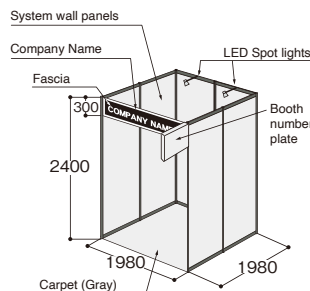
Can not apply 2 booths or more.

1 booth=4㎡(2m×2m)

Early Bird JPY **260,290**

Ordinary JPY **283,060**

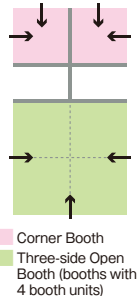
Carpet (Gray)	4㎡
Back (White system wall panel H2.7m,Black pole) *	○
Side (White system wall panel H2.7m,Black pole) *	○
Booth number plate *	○
300W main electrical power supply (a breaker switch only - no outlet)	300W
Fascia (Black)	1
Company name	1
Information desk	×
Folding chair	×
LED spot lights	2



Option / etc

• **Fee for corner space**
(for exhibitors using only a booth unit)
+ JPY 55,000 (Tax included)
Corner booth unit is promised.

• **Fee for three-side open booth**
(booths with 4 booth units)
+ JPY 66,000 (Tax included)



Height limit

Number of booth unit	Height
1-5 booth units	2,700mm
6 booth units or more	4,500mm (set back 1m)
Compact Booth	2,400mm

For more information about exhibiting, click here. ▶ www.japantex.jp

